

# Roller Derby

NUMBER 6

OFFICIAL PUBLICATION



INTERNATIONAL LEAGUE

**FREE! FREE! FREE!**

**H  
O  
N  
D  
A**



The Honda so shown above is similar to the one to be given away at the end of our regular season. Just deposit the attached coupon or the entire page in the receptacle at the main entrance.

**SPONSORED BY THESE  
HONDA DEALERS**

• **OAKLAND HONDA**

3020 BROADWAY, OAKLAND  
PHONE 835-2939

• **HONDA of  
SAN FRANCISCO**

928 VAN NESS, SAN FRANCISCO  
PHONE 771-4535

• **J K CYCLE INN  
HONDA and TRIUMPH**

12545 SAN PABLO, RICHMOND—235-7211

• **EMERY'S HONDA**

1401 W. SAN CARLOS, SAN JOSE  
PHONE 295-7295

• **HONDA of SAN MATEO**

101 E. 25TH AVE., SAN MATEO  
PHONE 341-5867

Signature

Age

Name (printed)

Street

Phone

City and State

You must be 16 to enter

# PLAYER OF THE MONTH

After the Bombers' successes in recent series, particularly in a tandem against the New Yorkers of the National Skating Derby, some Roller Derby fans have been contending the big reason for the new display of winning power is volatile Judy Arnold, our latest player of the month.

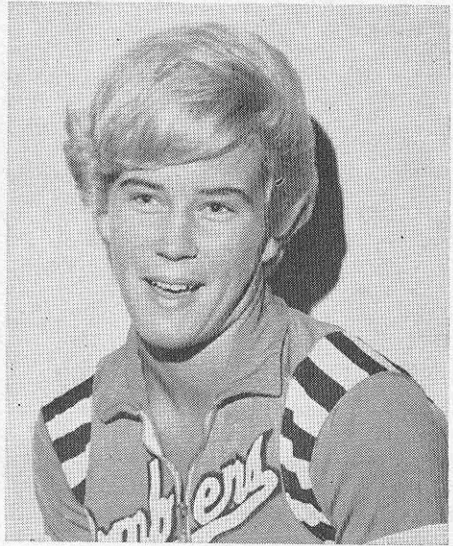
Even a few veteran observers of the International Roller Derby League (and Bomber) scene suggest the hard-skating Judy has made the Bay club stronger over-all.

The records tend to justify that contention.

When Bomber girls team leader Joanie Weston was sidelined during the New Yorker series with dental problems, the assignment of bossing the femme squad fell to the tough and nimble Miss Arnold. She responded magnificently — getting great mileage out of a girls team that previously had behaved erratically.

The Bombers disposed of the very rough New Yorkers by a margin of six games to nothing, with Miss Arnold and the girls figuring mightily in each of those victories against a team that seemed to come more to battle than skate.

But this is the forte of Judy Arnold. Unlike many sturdy gals in Roller Derby circles, Judy fears not when it comes to bruising, rugged action on the banked track. She has an explosive



JUDY ARNOLD

temperament that won't be restrained once she's ruffled. Many an opponent has felt her wrath during this season—but there's a catch to her volatility.

When in previous seasons Judy's explosions would lead only to tussling, this year she manifests her anger in great skating displays. And that means points, not fists and elbows.

Arnold is a solidly structured young lady still in her early 20s, a tigress of the track who attained rookie of the year honors when she first joined the Bombers earlier this decade. Judy was on her way to greatness in her first two years then retired, briefly, before being re-signed by the Bombers shortly before the 1966 campaign opened.

# ON TO CANADA...

Roller Derby will make its first full-fledged invasion of Canada this fall. A franchise has just been awarded to Montreal, and it's possible IRDL spokesmen say, that another club will skate out of Toronto because of the hot competition between that city and Montreal.

Beginning this month, the Canadian Broadcasting Corporation (CBC) will televise tapes of IRDL games across the Canadian continent so that fans from Prince Edward Island to Vancouver will become familiarized with the skate game.

A few Derby games already have been played this season in both Victoria and Vancouver, B. C. But the new franchise, to be unveiled in mid-October, will play in Ottawa, Quebec and Windsor and London, Ontario, as

well as Toronto and Montreal.

The franchise holders, veteran sportsmen and promoters on the Canadian scene, say they intend to stock their club with several local skaters—and probably a few stars from the National Hockey League teams in Montreal and Toronto.

Because hockey players are so used to playing at blinding speeds, they should have no trouble adjusting to ball bearings instead of blades, the franchise leaders contend. The use of hockey players will ensure a fan following for the skate sport.

The Canada club will be playing against the IRDL's new full-time Eastern franchises from New York and New England, according to tentative scheduling plans announced by the Commissioner's office.

## OFFICIAL ROLLER DERBY SOUVENIRS

# *Welch Catering Co.*

Roller Derby Novelty Division

1226 Folsom Street

San Francisco, California 94103

BOMBER YEAR BOOK.....	\$1.00
PLAYOFF PROGRAM .....	.50
ROLLER DERBY PROGRAM.....	.35
PLAYER PICTURE (2 x 2) Individual.....	.25
ACTION SHOT (8 x 10) Individual.....	.75
TEAM PICTURE (8 x 10) Individual.....	.75
BOMBER BADGE WITH SKATE.....	1.00
PENNANTS, BOMBER .....	.75
BOMBER HAT .....	1.50
TEAM BRACELETS .....	1.50
BOMBER DECAL .....	.25

With all orders, please enclose 25¢ to cover postage and handling.

Be sure to deposit  
the attached coupon  
for the  
**FREE**



ladies beautiful

## DIAMOND RING

set in solid gold specially designed  
by **SIDNEY MOBELL** and a  
distinctive man's SIGNET RING with  
an elegant DIAMOND setting.

Courtesy of ...

YOU MAY DEPOSIT THE COUPON  
OR PAGE FOR END OF SEASON  
DRAWING. YOU NEED NOT BE  
PRESENT TO WIN!!

*Fine Jewelry by*  
**sidney mobell**  
*2 Geary, San Francisco*



NAME PRINTED

ADDRESS

CITY

PHONE

AGE

SIGNATURE

# BOMBER CAPTAINS



CHARLIE O'CONNELL



JOAN WESTON

## U-DRIVE TRUCKS

All Types - Daily - Weekly - Monthly Rates  
 Moving Vans - Stakes - Pickups - Tractors - Semi-Trailers

### CALIFORNIA MOTOR RENTAL SYSTEM

OAKLAND  
 2250 E. 12th St.  
 Phone: 536-1377



BERKELEY  
 950 University Ave.  
 Phone: 841-8921

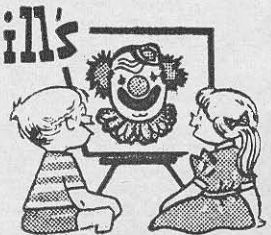
## POPCORN — PEANUTS

AND SUPPLIES

CANDY COATED BRICKS AND CARAMEL CORN

TOP  
 QUALITY  
 GUARANTEED

- THEATERS
- CHURCHES
- CONCESSIONS
- SCHOOLS
- AND SPECIAL GROUPS
- DRINKING CUPS & SYRUPS



CALIFORNIA POPCORN & PEANUT SUPPLY, INC.

*One of the World's Largest and Finest Processors of Popcorn and Peanut Products*

536-1760  
 1730 E. 12th  
 OAKLAND

# FREE!

## 1966 BAY BOMBERS SCHEDULES

NOW AVAILABLE AT

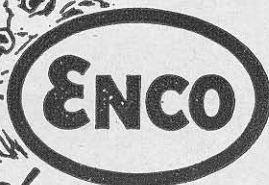
YOUR  
NEIGHBORHOOD



SERVICE  
STATIONS

*"Go to the game with ENCO"*

*Use Enco Extra Gasoline . . .  
It Puts a Tiger in Your Tank!*

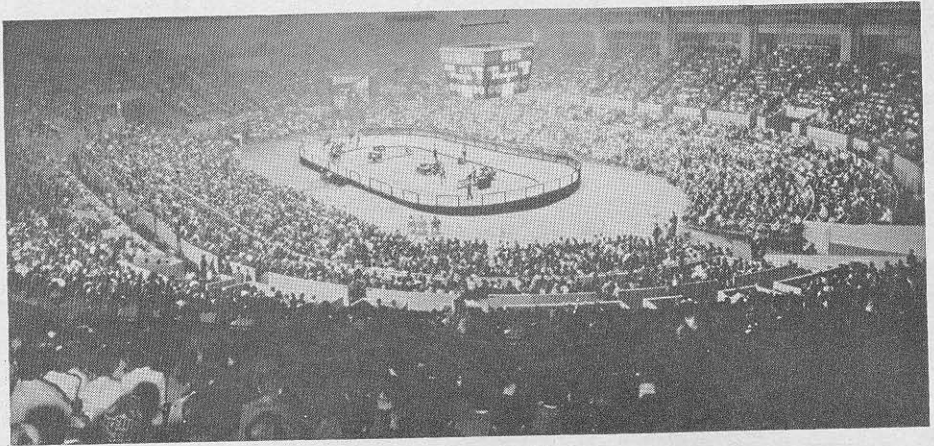


SIGN OF

*Happy Motoring!*

**HUMBLE** OIL & REFINING COMPANY

# 1965 NATIONAL CHAMPIONSHIP PLAYOFFS



## SAN FRANCISCO COW PALACE

SEMI-FINALS: FRIDAY, SEPTEMBER 24—ATTENDANCE.....12,163  
 FINALS: SATURDAY, SEPTEMBER 25—ATTENDANCE.....15,122

### RESULTS—SEMI FINALS

1st Game		2nd Game	
PIONEERS .....	39	CHIEFS .....	31
CARDINALS .....	40	BOMBERS .....	36

### RESULTS—FINALS

3rd Place Game		Championship	
PIONEERS .....	38	CARDINALS .....	42
CHIEFS .....	36	BOMBERS .....	45

### M.V.P. PLAYOFF AWARDS

WOMEN .....CATHIE READ    MEN .....TONY ROMAN

### TEAM HIGH SCORERS—2 GAMES

Bombers		Cardinals	
ANN BAUER .....	10	HARLEAN KHIEN .....	11
TONY ROMAN.....	24	JIM COOK.....	10
Chiefs		Pioneers	
JUDY McGUIRE.....	18	BETTY PETERSON .....	13
RONNIE ROBINSON .....	15	FRANK MACEDO.....	16



THE BAY BOMBERS  
TRAVEL AGENT  
**HOWARD  
TRAVEL SERVICE**

*for:*  
**BUSINESS**  
or  
**PLEASURE  
TRAVEL**

in  
**OAKLAND**  
578 GRAND AVENUE  
Phone  
836-1707

*Across the Street from Kezar Stadium*

# Kezar Club

Beer • Wine • Liquors  
Sandwiches  
German Beer on Tap

*Private Dining Room  
for Weddings and Parties*

Our Special-Wednesday Night from  
6 to 8:30 Sauerbraten and  
Potato Pancakes

**DICK STEFFENS** 770 Stanyan St.  
Prop. San Francisco  
EVergreen 6-9961

# ROLLER DERBY TRAINING CLUB

*"LEARN TO BECOME A  
ROLLER DERBY SKATER  
PROFESSIONAL  
TRAINERS"*

1510 105th Avenue  
Oakland, Calif.  
568-9768

## *Buy Official* ROLLER DERBY SKATES

RINK SKATES, UNDER \$14  
OUTDOOR SHOE SKATES FOR  
CHILDREN, UNDER \$6

*Available at All Leading  
Toy, Sporting Good, and  
Department Stores*

# OFFICIAL RULES FOR ROLLER

The game consists of two halves, each half has four alternating 12-minute periods of boys and girls.

A TEAM is composed of five boys and five girls. Only five members of each team can be on the track at one time.

GAME STARTS when the referee signals by blowing his whistle that the two teams are equally in position. This group is called the pack. In this pack are two BLOCKERS (white helmets) and two JAMMERS (striped helmets), and a PIVOT MAN (black helmet).

A JAM (scoring play) occurs when one or more jammers have pulled away from the pack. The jammers have 70 seconds to score. A jammer must wear a striped helmet. The blocker, who cannot score, wears a solid colored helmet. The pivot man can jam as long as he isn't the first jammer out of the pack. A jam can start:

1. When the referee has signaled that both teams are in the pack.
2. When the pivot man of each team is evenly together at the front of the pack.
3. When all jammers are at the rear of the pack.
4. When a pivot man from each team is on the track.

The clock and the jam actually start when one of the jammers has been able to pass the leading opposing blockers in the pack.

Helmets must be worn by the jammers to score, unless through some involuntary action the helmet is knocked off, then the referee has the right to decide on this point.

A jam will be considered at an end for any of the following reasons:

1. The expiration of the 70-second time limit.
2. At the conclusion of each 12-minute skating period.
3. When the lead jammer places both hands on his or her hips.
4. A jam may also be called off by the officials for any emergency.

A jammer receives one point for every member of the opposing team he or she passes, every time he or she laps the field within 70 seconds.

There are PENALTIES consisting of two and five minutes that may force a team to skate shorthanded.

## RULE 2 — SCORING

A. Points are scored as follows:

1. A jammer receives one point for every member of the opposing team he or she passes, every time he or she laps the field within 70 seconds.

B. If a blocker commits a foul on a jam skater, the jam skater will be awarded the point that he or she is attempting to score. If, in the opinion of an official, there is a deliberate penalty against a jamming skater to prevent that skater from scoring, and this jam would determine the game's outcome, the official may award up to five points on the jam.

The determining factor would be the score differential at the time of the jam. The injured team's score could not be raised higher than the fouling opponent.

C. A skater forced into the infield may not better the position he was in when he left the track.

D. A skater receiving a penalty becomes ineligible to either score or be scored on.

E. A fouled skater cannot be passed for a point unless he or she has had sufficient time to recover from the foul.

F. No jam can be considered a legal jam with more than five skaters on the track from each team.

G. A skater with skate trouble cannot be passed for a point.

## RULE 3 — REPLACEMENTS

A. When one skater replaces a teammate he or she must make contact with the skater he or she is replacing and join the pack.

B. An injured skater can be replaced at any time.

C. A skater replacing a teammate who has skate trouble must rejoin the field within one lap of the replacement.

## RULE 4 — CONCLUDING A JAM

A. A jam will be considered at an end for any of the following reasons:

1. The expiration of the seventy (70) second time limit.
  2. At the conclusion of each twelve (12) minute skating period.
  3. By the leading jam skater placing both hands on his or her hips.
- B. A jam may be called off by the officials at any time for any emergency.

## RULE 5 — PENALTIES

A. There will be two penalties, a major (five minutes) and a minor (2 minutes).

B. A minor penalty will be two minutes duration and will be called at the discretion of the referee for holding, illegal blocking, stalling, tripping, illegal use of the hands, and other minor fouls.

C. A major penalty will be of five minutes duration, and will be called at the discretion of the referee for fighting and intentional roughness, deliberate and excessive insubordination, gross unsportsmanlike conduct, and railing.

D. A major penalty calling for expulsion from the game will be called at the discretion of the referee.

1. If a player is ejected from the game his or her team receives a five minute penalty.

E. If a penalized skater does not leave the track immediately or interferes with the remainder of the field he or she will receive an additional two minute penalty.

F. If a skater's penalty time overlaps into the following period, ANY member of the opposite sex taking the track must serve out the balance of the penalty time.

G. No more than two players on any team can

# DERBY IN 1966 SEASON

be in the penalty box at one time. If a third player or more is penalized, the player or players committing the penalty must leave the track and be replaced by a substitute. The penalized skater will begin serving his penalty time when one of the skaters in the penalty box returns to the track. At such time, the substitute will return to the bench.

## RULE 6 BANISHMENT

A. If any player accumulates a total of twelve (12) minutes in penalties during one game he or she is automatically ruled out of the game and his or her substitute will spend the time of the last penalty in the penalty box.

## RULE 7 — BLOCKING

A. A player may block an opponent with any part of his or her body with the following exceptions:

1. It is illegal to use any part of the arm below the elbow.

2. It is illegal for a skater to block with his feet or trip an opponent.

3. In using arms for blocking purposes, the arm must be BENT, not extended full length.

4. It is illegal to block from the rear.

B. Elbows may be used in blocking, but not in the following manner:

1. A skater is not permitted to use an elbow block above the shoulders.

2. A skater is not permitted to use an elbow with an upward or downward motion.

C. In setting up a double block, it is illegal for the defensive skaters to grip hands or lock arms. Both blockers may receive a penalty at the discretion of the officials.

D. Other forms of illegal blocking may be called at the discretion of the officials.

E. No defensive skater will be permitted to drop back more than a distance of twenty (20) feet behind the pack to attempt to block a jammer. A two minute (minor) penalty may be called by the official.

F. All skating must be in a counter-clockwise direction.

## RULE 8 — OVERTIME

A. There can be no tie games. If at the end of the eighth period the score is tied, the game will go into overtime in the following manner:

1. The girls and boys will alternate five-minute skating periods until a point is scored. The team scoring first point will be declared the winner.

## RULE 9 — PROTESTS

A. Any coach has the right to protest a game by submitting said protest in writing within 48 hours after the game has been concluded to Roller Derby League headquarters.

## RULE 10 — REFEREES

On any disputed point that is not clearly spelled out in these rules, a consensus of the referees will have the final decision.

## COMPTON SPORTING GOODS

### *Official Outfitters to the Roller Derby*

Two models of rink skates carried in stock —The famous **Roller Derby Specials** and the new Super deluxe **Royals**—Men's and women's sizes.

We also stock the official Roller Derby stretch-knit tights with leather covered pads.

Uniforms made to order in your choice of style and colors.

We are specialists in uniforms and equipment for all sports — Brunswick bowling and billiard supplies.

### TROPHIES — EMBLEMS — ENGRAVING

324 - 12th Street

Phone 452-3470

Oakland, California

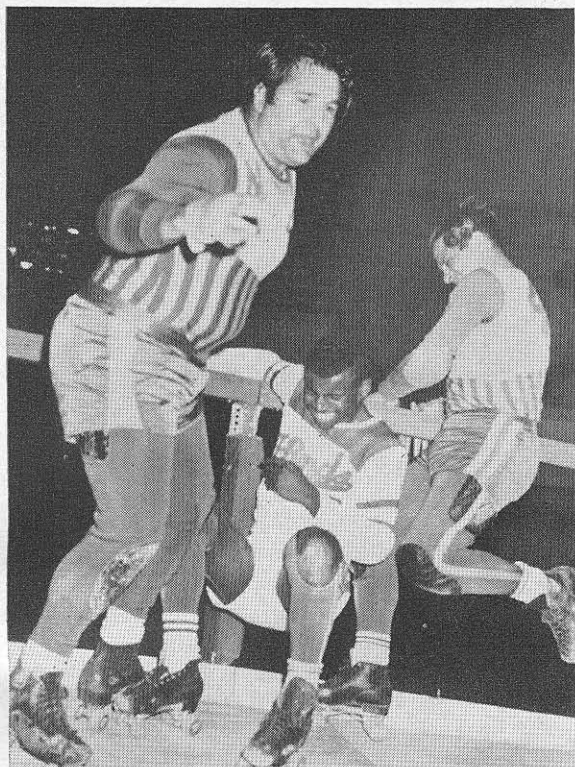
**Have a Coke...**  
TRADE-MARK ©  
**it's part of the fun**



Enjoy that  
**REFRESHING  
NEW  
FEELING!**



**BOTTLED UNDER AUTHORITY OF THE COCA-COLA COMPANY BY  
THE COCA-COLA BOTTLING COMPANY OF CALIFORNIA**



# ***Roller Derby Action***



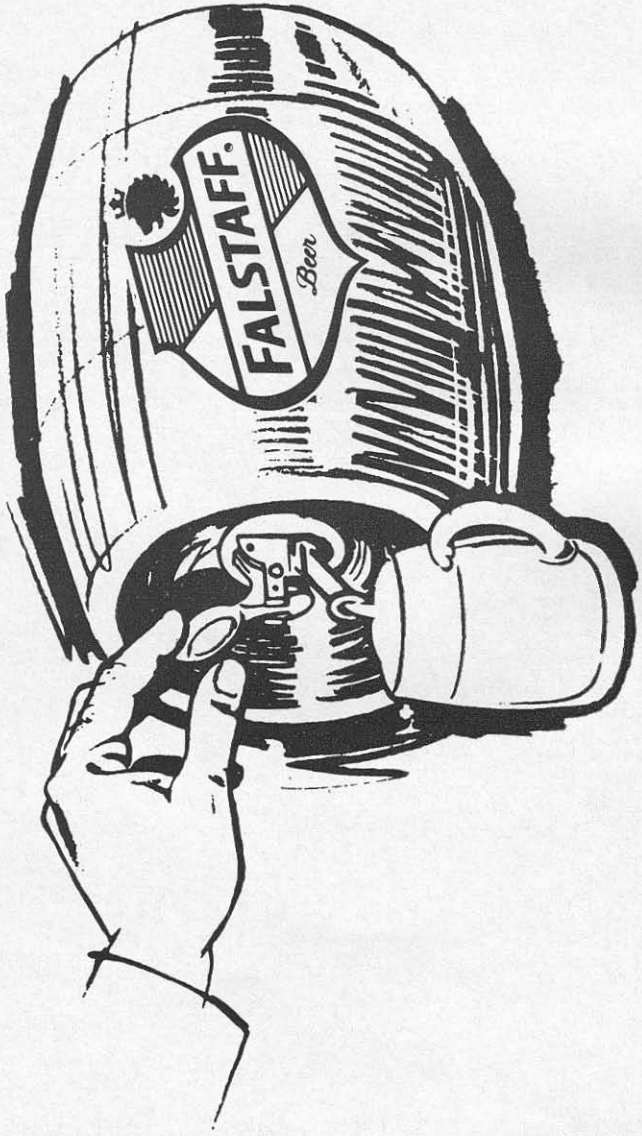
John Parker leaving the scene  
of the crime



ExBomber Judy Sowinski  
blocks out former teammates  
Ann Calvello and Annis Jensen



Try a Keg of Real Draft Beer !!



The **FALSTAFF**® *TAPPER*

Falstaff Brewing Corp.  
St. Louis, Mo.

# **BOMBER BITS...**



After chasing the Northwest Cardinals most of the season, the Bombers have finally regained their first month lead and sit on top of the International Roller Derby League standings.

The Bombers moved up to the pole position in league standings when they blanked the New Yorkers of the National Skating Derby in a mid-July interleague series. At the same time the Bay kids were polishing off the New Yorkers six-nothing, the Cardinals were running into mountains of trouble against the NSD's Thunderbirds down in Los Angeles.

Bomber Coach Charlie O'Connell was obviously pleased with his club's ascendancy into first place, but cautioned against unguarded optimism with six weeks still remaining in the 1966 season.

The Bombers have had so many ups and downs in personnel this year that Charlie is in no mood to count his chickens before playoff time. Yet, it would seem to the student of the game

that the Bombers are rather well set—if more injuries do not overtake them.

Both Lou Donovan and the recently returned Tony Roman have been marvelous on offense. O'Connell has battled back from a series of minor but nagging illnesses and injuries to present a sturdy bastion of defense.

On the distaff side, Judy Arnold (see Player of the Month, Page 3) has provided thrill after thrill for Bomber adherents, while reed-like Susie Fregulia figures to land among the top five scorers for the first time in her long career. With Joanie Weston back from her recent dental ailment, the girls are set.

The schedule may be the biggest stumbling block for the Bombers the rest of the way in 1966. They've got nothing but short series coming up—and the shorter the series the more visitors can get "up" for games against the Bombers. One of those series, later this month, will be against the hard-charging Boston Braves, who could be favorites come playoff time.







# Roller Derby Mailing List

Don't be left out of the action. If you want to make sure you keep up to date with the International Roller Derby League schedules and other important season events, make sure your name is on the IRDL's mailing list.

Write today and send your full name, address and zip code to "Roller Derby, P. O. Box 1828, Oakland, Calif. 94804." Get it off today and keep in step with the Roller Derby.

# Old-time flavor likes you best!



T.M. Reg. U.S. Pat. Off.  
Pabst Brewing Company,  
Milwaukee, Peoria Heights,  
Newark, Los Angeles

# ***THE HAWKS FLY IN***

The last tandem of the 1966 inter-league schedule between the International Roller Derby League and the National Skating Derby is now taking place—with the Bay Bombers, leading the old league's standings, meeting the potent Chicago Hawks, in the middle of the NSD pack.

The Hawks, whom the Bombers have little scouting information on, are billed by the NSD publicists as a tough, defensive club that can frustrate speed-minded teams like the Bombers night after night.

The other NSD teams that have come through Bomber country say the Hawks can be as rock-like as they come on any given night.

Much of the reason behind the Chicago's team strategy must set with their coach, the familiar John (Porky) Parker. The beefy Parker, who's not so Porky as in past seasons, always managed to be the leading defensive skater in his several seasons with the IRDL. Year after year, John led in the rarely publicized but highly vital statistical division of fewest points allowed per jam. When John was at the back of the pack, the enemy rarely slipped through.

And Parker, now down to a mere 227 pounds from his one-time porcine girth of 265, has apparently instilled these defensive notions on all the Hawks. In NSD statistics, they're the second least scored upon team in the circuit. However, a lack of scoring punch has kept them from rising higher in the junior circuit's standings.

Parker left the IRDL for this opportunity to coach—one of his perennial ambitions. The weight loss seems to go with this new "image" of his, although he's keeping his diet a secret.

The Hawk roster includes a veteran banked track warrior in George Vogt (pronounced "vote"), who hasn't been seen by IRDL fans for about nine years. Vogt is the team's offensive leader.

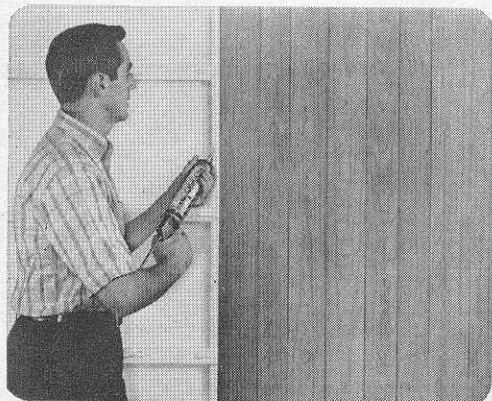
On the Chicago girls squad are such stars as Tony Tagg, Sally Vega and Judy Sowinski, the latter a former Bomber who will be skating against her teammates for the first time.

Since Parker took over the Hawks in mid-April, they've been skating at a better than .500 clip and seem to be at the top of their game for this big series in the Bay.

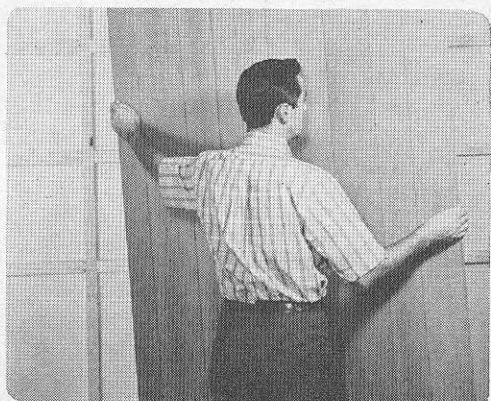


# New Nailless Royalcote Panel Application System

takes the hard work out of paneling a room



New Royalcote general-purpose adhesive quickly and permanently affixes Royalcote Panels in place. No unsightly nail holes. Apply with caulking gun over solid backing, furring strips, or studs.



Large, precision-cut Royalcote Panels are made to order for do-it-yourselfers. Easy to handle, easy to line up. They cover a wall in no time flat. Adhesive forms a permanent bond, dries quickly, yet allows adjustment.



Finish the job with Royalcote color-matched moldings. Your choice of metal, or vinyl-covered wood, including base, cove, casing inside and outside corners. Moldings also can be applied with Royalcote Adhesive.

Royalcote Adhesive is ideal for dozens of weekend projects where a strong, dependable bond is needed (dog and bird houses, etc.), making the finished job neat and nailless.



**MASONITE**  
*...does it better*

Royalcote and Marblitone are registered trademarks of Masonite Corporation



For a beautiful, professional-looking finished job that's as easy as one, two, three—see your lumber dealer and choose from 13 Royalcote woodgrains, plus Marblitone. Send coupon for full-color booklet.

MASONITE CORPORATION Dept. PM-12  
Box 777 • Chicago, Ill. 60690

Please send me the full-color, eight-page booklet,  
"How To Be Your Own Decorator Using Royalcote  
Woodgrain Paneling."

Name \_\_\_\_\_

Address \_\_\_\_\_

City \_\_\_\_\_ State \_\_\_\_\_ Zip Code \_\_\_\_\_

# THE BAY BOMBERS

## *Ticket Information:*

GET YOUR BAY BOMBER AND ROLLER DERBY TICKETS  
AND INFORMATION AT:

- SAN FRANCISCO: Downtown Center Box Office, 325 Mason St., YU 2-7916.  
Cow Palace, YU 2-7916
- OAKLAND: Bay Ticket Office, 1746 Broadway, GL 1-7279.
- SAN JOSE: Civic Auditorium, CYpress 7-3105.
- RICHMOND: BEacon 3-2227.
- SACRAMENTO: Breuners, GI 2-7010.
- STOCKTON: Civic Auditorium.

(Note: You can get tickets now for any Bomber games throughout the season in any of the above locations, also for special IRDL games anywhere in Northern and Central California.)

## THE BOMBER STAFF:

---

Team General Manager.....	Gerald E. Seltzer
Team Coach (and Men's Captain).....	Charlie O'Connell
Women's Captain.....	Joan Weston
Business Manager.....	Hal Janowitz
Ticket Manager.....	Peggy Brown
Television Supervisor.....	Manny Brooks
Publicity Director.....	Payne Garrwood
Public Relations Director.....	Rich Hildebrand
TV Games Announcer.....	Walt Harris



**BEST**

**OF THE**

**BUNCH**

**CARNATION  
COMPANY**

1310 - 14th ST., OAKLAND, CALIF.  
PHONE 451-8161

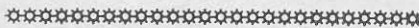
**H. SHENSON  
Inc.**

SAN FRANCISCO, CALIF.

*Supreme Quality* **MEATS**



1040 Bryant St.  
UNderhill 3-8800



**POPCORN**

**PEANUTS**

**COMPLETE CONCESSION  
SUPPLIES**

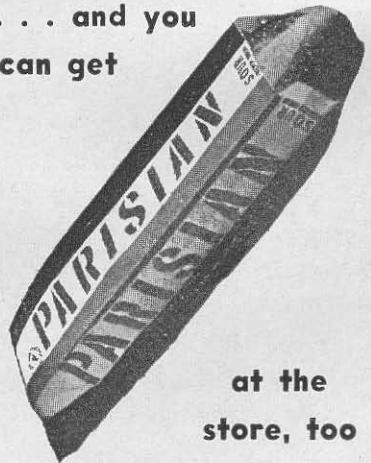
**WRIGHT  
POPCORN**

**CO.**

150 POTRERO, S.F.  
UN 1-0912



**. . . and you  
can get**



**at the  
store, too**

*In the Red, White and  
Blue Wrappaire*

**PARISIAN BAKERIES**

1995 Evans Ave. • San Francisco  
VA 6-1273



*“When you’re out of Schlitz,  
you’re out of beer . . .”*

JOS. SCHLITZ BREWING CO.  
LOS ANGELES • SAN FRANCISCO

---



*“So down right light”*

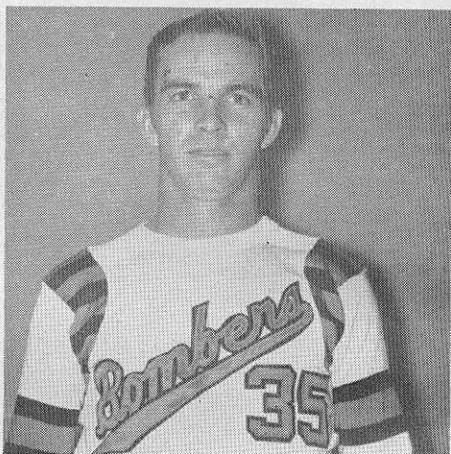
JOS. SCHLITZ BREWING CO.  
LOS ANGELES • SAN FRANCISCO

# BAY STARS



*Joan Weston*

JOAN WESTON  
Perennial Bomber All-Star



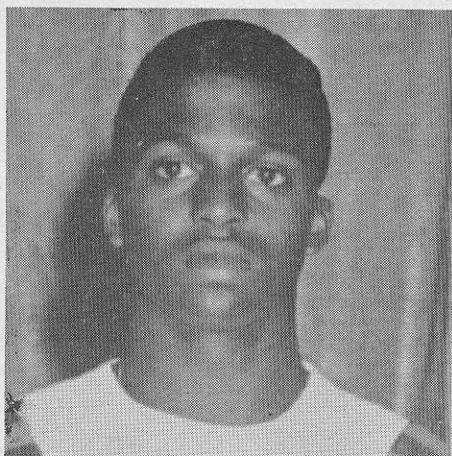
*Lou Donovan*

LOU DONOVAN  
Former Boxer, Five-Year Vet



*Sue Fregulia*

SUE FREGULIA  
Slender But Hardly Fragile



*Dewitt Quarles*

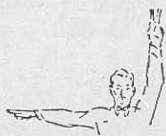
DEWITT QUARLES  
Only 22, Already A Star



## REFEREE'S SIGNALS



NO SCORE



POINTS SCORED



JAM CALLED OFF



HOLDING



JAM OFF—  
SKATER INTO INFIELD



DELAYING GAME



SLUGGING



UNNECESSARY ROUGHNESS



KNEEING



TRIPPING



INSUBORDINATION



PUSHING



ILLEGAL BLOCKING

Meal-time,  
Snack-time,  
Any Old Time

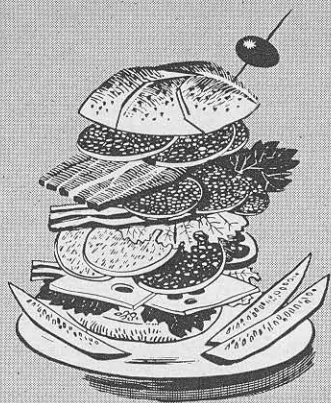


It's the right time to serve...

**GALILEO** ITALIAN-  
STYLE **DRY SALAMI**  
and other Finest Quality\* Sliced Luncheon Meats



GALILEO products repeatedly win top awards for quality at California State Fair, Sacramento, and Annual Trade Fair of Rome, Italy.



Miss Roller Derby of 1975 says:



“ Mommy, please put lots and lots of Gal'leo S'lami on my san'wich. ”

Product of **GOLDEN GATE SALAMI CO., San Francisco**

SEAFOOD  
STEAKS  
COCKTAILS

SINCE 1894

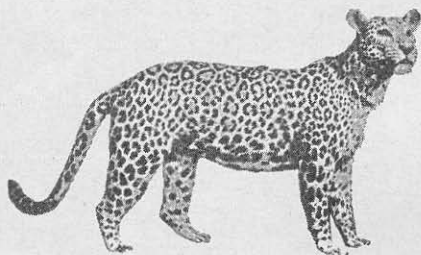
# Spenger's

## Fish Grotto

FREE  
PARKING  
OPEN  
8 A.M.-1 A.M.

*If It Swims - We Have It!*

YES! WE HAVE A CHILD'S PLATE AND FOOD TO GO  
IN BERKELEY AT 1919 FOURTH ST. • PHONE 845-7771



For The Greatest  
Names In Dining

ROBERT ANTRACCOLI'S  
**THE LEOPARD**  
STEAK SPECIALISTS

*Giant Booster Meetings*  
140 FRONT ST. • SAN FRANCISCO

# THE GALLEON

*Dining Par Excellence*

PACIFIC MARINA, ALAMEDA



Boat Docking  
Facilities

TONY ROMAN

JUDY ARNOLD





**CHARLIE O'CONNELL'S**  
**THE PANDORA**

**LIVE ENTERTAINMENT WED - SAT!!**

• Open 10 a.m. - 2 a.m.

16260 E. 14th St. • San Leandro • Phone 278-2636

NEXT TO CHARLIE O'CONNELL'S PANDORA

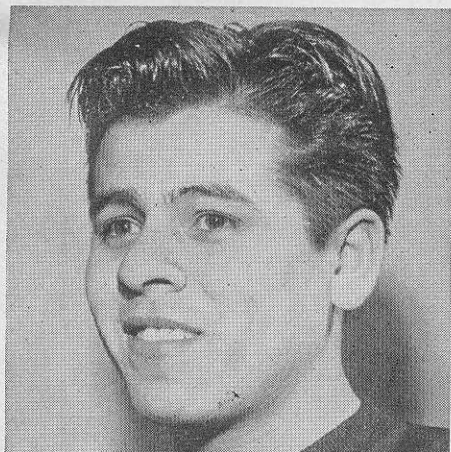
**JO JO'S**  
**ITALIAN RESTAURANT**

16250 E. 14th St.

SAN LEANDRO

**RAVIOLI**  
**SPAGHETTI**  
**PIZZA**

Phone 278-5656



*Gil Orozco*

**GIL OROZCO**  
Former Football Player



*Charlie O'Connell*

**CHARLIE O'CONNELL**  
Skating's "Mr. Roller Derby"





JUDY SOWINSKI



TONI TAGG

# On The Road

As the 1966 International Roller Derby League season enters its final, crucial weeks, the newcomer Boston Braves seem to be making the biggest news on the road.

Although they've played fewer games than any other club in the league, save the orphaned Hawaiians, the Commissioners recently ruled that winning percentage and not total number of games played counts for playoff spots — so the New England entry seems a sure bet for the September playoff action.

The Braves have been getting fine performances from several skaters—particularly Bobby Seevers and Bertha Ruiz, both of whom are in the First Five in the scorers races. While on the road, the Braves have enjoyed successes against the slumping Cardinals and the Chiefs.

The race for second place in the IRDL has tightened up considerably since the Cards' recent slump in Los Angeles. The Northwesterns and the Chiefs have been bouncing in and out of second daily—while the Braves are moving up fast along the rail.

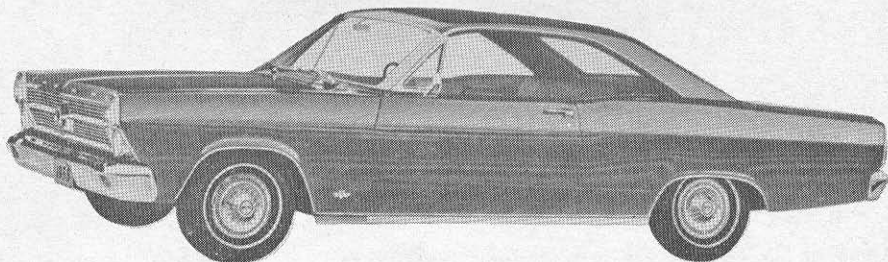
The Chiefs have been heartened lately by the record-setting scoring binge of Dynamite Mike Gammon, who recently erased an 18-year-old season scoring mark in the just concluded series with the Bombers. Mike and his missus, Judy McGuire, also of the Chiefs, are cinch bets to win the scoring titles this year.

The Braves are dickering for the contract of Kathy Read, perennial IRDL all-star. If they sign her, it could mean big rewards at playoff time—and possibly a challenge at the Bombers' first place spot in their Bay Area series later this month.

## TURNER FORD

**"Bay Area's Only**

**AUTO SUPER MARKET"**



**3 ACRES OF CARS TO CHOOSE FROM**

*Headquarters for:*

**NEW FORDS, MUSTANGS, T-BIRDS, FALCONS, TRUCKS,  
A-1 USED CARS**

**601 El Camino, San Bruno** (3 Min. from S.F. Airport)

**588-6032**



# Alamo Holiday House

3202 DANVILLE HIGHWAY  
Alamo, California 932-3100  
UNIQUE GIFTS FOR ALL OCCASIONS

IMPORTED BEADED SWEATERS

IMPORTED BEADED HAND BAGS

*HAND BLOWN VENETIAN GLASS*

BY

ALFREDO BARBINI

IMPORTED BRASSWARE FROM INDIA

SELECT LINE 14K GOLD JEWELRY

YVONNE RANGER, Owner

ROBERT PASQUALE, Manager



No 32657

YOU CAN **SAVE**  
A LOT OF **MONEY**

AT **ARATA**  
**PONTIAC**  
**TIGERVILLE**

Your old car is worth \$800 more on any  
new Grand Prix or Bonneville in stock!!!

**GTO**

Only \$60 per month\*

**\$2666.00**



\*After Normal Down Payment

V8 ENGINE — RADIO — HEATER — SEAT BELTS — DIRECTIONAL  
SIGNALS — CIGARETTE LIGHTER — BUCKET SEATS — REDLINE TIRES

**TWO LOCATIONS**

**NEW AND USED CARS (Phone for Free Appraisal)**  
in **SOUTH SAN FRANCISCO** in **SAN BRUNO**  
**99 Linden Ave.** **529 El Camino**  
**Phone 761-2200** **Phone 589-9543**